

LTR-150



DRY BLOCK AND LIQUID
BATH ALL-IN-ONE
TEMPERATURE CALIBRATOR
FLEXIBLE – EASY TO USE
(-30 TO 150°C)

The Kaye LTR-150 is the most advanced multi-purpose calibrator specifically designed to address the capacity and flexibility needs for thermal validation.

From its ability to calibrate 48 thermocouples at one time to its versatility to function as a dry block, liquid bath or surface calibrator, the LTR-150 saves hours of time and effort when calibrating or verifying validation sensors.

The LTR-150 is compatible with the Validator 2000, Validator AVS, ValProbe (RT) or RF ValProbe software for automatic sensor calibration or can be used stand-alone via its easy-to-use touch screen display.

FEATURES & BENEFITS

- Operating range of -30 to 150°C with temp stability of up to 0.01°C and uniformity of up to 0.1°C
- Fast heating and cooling times
- Ability to be used as dry block, liquid bath and surface calibrator
- Calibration of up to 48 thermocouple with dry block insert savings hours of time
- Thermocouple fixture for easy handling of up to 48 TCs
- Dry block inserts are designed to accommodate thermocouples, IRTD, ValProbe (RT) flexible/bendable as well as RF ValProbe probes
- Software interface for all existing Kaye products (IRTD, Validator 2000, Validator AVS, ValProbe (RT) and RF ValProbe) software for automatic/manual calibrations
- Liquid micro bath tub with sensor cage and magnetic stirrer can be used for thermocouples, special process probes as well as ValProbe (RT) rigid loggers
- Easy-to-use touch screen
- Universal power supply 100-240 VAC/50-60 Hz
- Addition inserts available for calibrating specialty or process probes

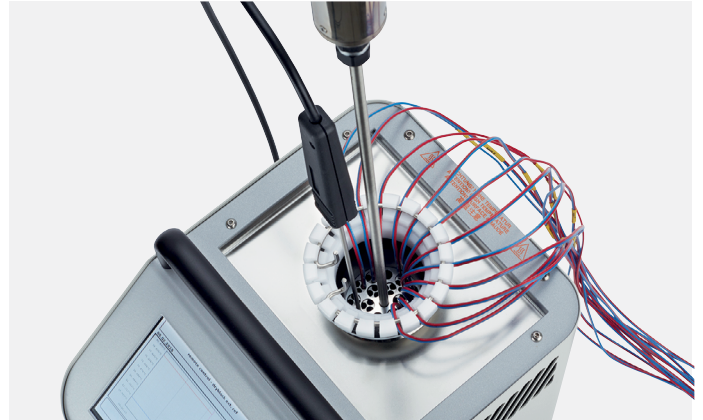
Flexibility and Efficiency with the LTR-150

The calibrator is extremely flexible and allows within minutes a fast conversion from dry-block calibrator to micro bath or even surface temperature function.

DRY-BLOCK FUNCTION

The LTR-150 comes standard with a 48 channel insert with 16 wells for thermocouples, as well as 2 for the IRTD and 1 for the external control reference probe. Each thermocouple well has a sleeve which can accommodate 3 thermocouples.

The LTR-150 also has several additional inserts available as options for calibration of specialty process probes.



THERMOCOUPLE FIXTURE

To ensure accurate calibration, the LTR-150 comes standard with a thermocouple fixture to be used with the dry block, ensuring that all thermocouples are securely held at the full immersion depth.



MICRO BATH FUNCTION

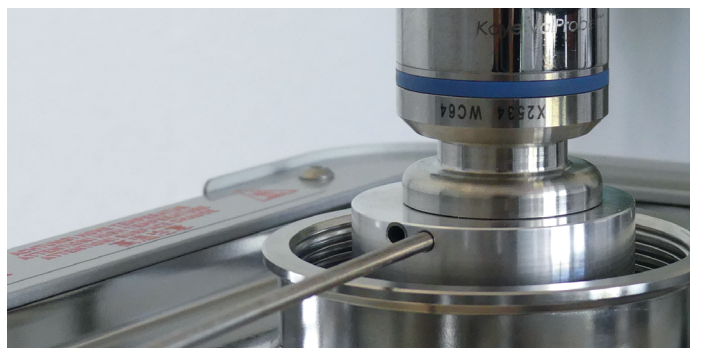
The LTR-150 can also offer an optional insert which allows the unit to be used as a micro bath. This allows the unit to easily be used for specialty probes or loggers such as ValProbes (RT). The optional micro bath tub kit comes with the micro tub, a sensor cage as well as a magnetic stirrer and sensor cover.

Kaye also offers silicone oil which covers the complete temperature range of the bath.

SURFACE TEMPERATURE FUNCTION

Surface temperature sensors are calibrated using a special insert. The reference probe is located directly beneath the contact surface of the insert. The insert is designed in such a way that the best temperature homogeneity is achieved in the center of the contact surface. The special design of the insert enables good thermal contact.

This optional insert makes the unit ideal for verification of Kaye flat surface ValProbes.



LTR-150 Specifications

TECHNICAL DATA

MODEL

Model	LTR-150
Control Sensor	External

Heating/Cooling time	20°C to -25°C in 45 min
	20°C to 121°C in 30 min
	121°C to 20°C in 30 min
	-30°C to 20°C in 20 min

DRY BLOCK

Temperature Range*	-30°C to 150°C (-22°F to 302°F)
Accuracy	±0.1°C (±0.18°F)
Stability	±0.010°C (±0.018°F)
Uniformity	0.1°C (0.18°F)

BLOCK DIMENSIONS

Diameter	Ø 60 mm (Ø 2.36 in)
Depth	170 mm (6.69 in)

MICRO BATH

Temperature Range*	-30°C to 150°C (-22°F to 302°F)
Accuracy	±0.15°C (±0.27°F)
Stability	±0.010°C (±0.018°F)
Uniformity	0.15°C (0.27°F)

DISPLAY UNIT

Display Unit	7" Color-Touchscreen
Resolution	0.1/0.01/0.001 – °C/°F/K

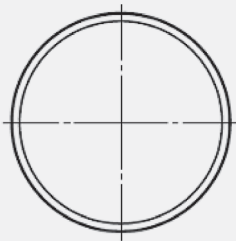
SURFACE

Temperature Range*	-25°C to 150°C (-13°F to 302°F)
Accuracy	±1°C (±1.8°F)
Stability	±0.15°C (±0.27°F)

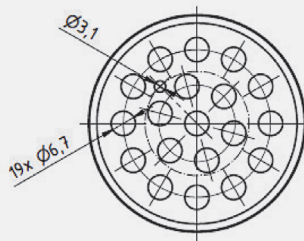
GENERAL DATA

Interface	Serial to Validator/Ethernet/3 X USB
Dimensions	210 mm x 300 mm x 380mm
Weight (approximate)	15 kg/33 lbs
Power Supply	100 - 240 VAC, 50/60Hz
Power Consumption	Approx. 375W

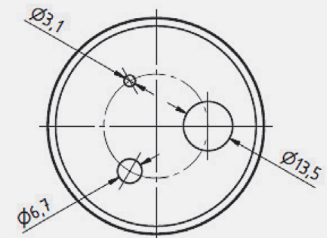
* at an ambient temperature of 20°C/68°F



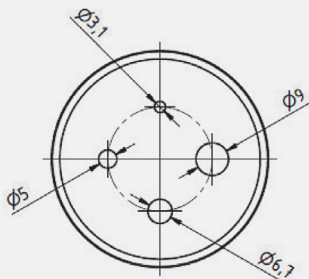
Insert Part Number:
410-3031



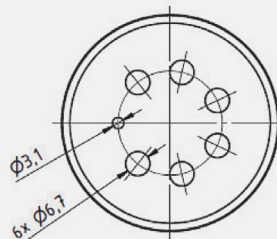
Insert Part Number:
410-3033



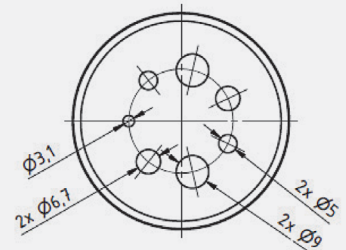
Insert Part Number:
410-3034



Insert Part Number:
410-3035



Insert Part Number:
410-3036



Insert Part Number:
410-3037

PART NUMBER**DESCRIPTION**

X0365

Kaye LTR-150 Multi-Functional Calibrator includes:

- 48 Sensor dry block Insert with sleeves and transport lid
- Thermocouple fixture
- Insert exchange tool/shielding adapter
- USB/serial adapter cable
- Firmware to support micro bath & surface calibrator functionality
- External control reference probe
- US and EU power cables (100-240VAC 50/60 Hz)
- User manual
- Calibration certificate

**ACCESSORIES****PART NUMBER****DESCRIPTION**

425-3061

Micro Bath Tub Insert includes:

- Micro bath tub
- Sensor cage with IRTD slot
- Magnetic stirrer
- Bath transport cover



V0830

1 l Silicone Oil - Temperature
Range -30 to 150°C

412-3054

Surface Calibration Insert

412-3066

Thermocouple Fixture

441-1053

LTR-150 Shipping Case

**Kaye Representative contact:****Request a demo:****EUROPE, MIDDLE EAST, AFRICA AND ASIA**

Amphenol Advanced Sensors Germany GmbH
Sinsheimer Strasse 6
D-75179 Pforzheim
T: +49 (0) 7231-14 335 0
F: +49 (0) 7231-14335 29
Email: kaye@amphenol-sensors.com

USA/AMERICAS

Amphenol Thermometrics, Inc.
967 Windfall Road
St. Marys, PA 15857
T: +1(814) 834-9140
F: +1(814) 781-7969
Email: kaye-us@amphenol-sensors.com

INDIA

Amphenol Interconnect India Pvt Ltd.
Plot no. 6, Survey No.64 | Software Units layout
MAHAVEER TECHNO PARK
HITECH CITY, MADHAPUR | Hyderabad,
Telangana – 500081 | T: +91 40 33147100
Email: kaye-india@amphenol-sensors.com

CHINA

Amphenol (Changzhou) Connector
Systems Co., Ltd, Building 10,
Jintong Industrial Park, No. 8 Xihu Road,
Wujin High-Tech Development Zone,
Changzhou, Jiangsu 213164
T: 0086-519-83055197

**SUBSIDIARY OF AMPHENOL**

Warranty and disclaimer: The information mentioned on documents are based on our current tests, knowledge and experience. Because of the effect of possible influences in an application of the product, they do not exempt the user from their own tests, checks and trials. A guarantee of certain properties or a guarantee for the proper suitability of the product for a specific, especially permanent application can not be derived from our data. Liability is therefore excluded to that extent permitted by law. Any proprietary rights of third parties as well as existing laws and regulations must be observed by the recipient of the product on his own responsibility.

© 2022 Amphenol Corporation. All Rights Reserved. Specifications are subject to change without notice. Other company names and product names used in this document are the registered trademarks or trademarks of their respective owners.